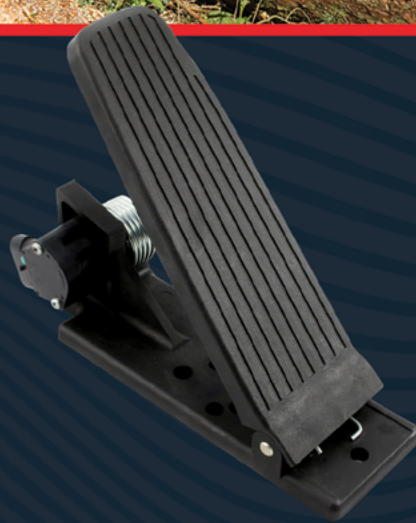


# Joysticks, Thumb Controls, Electronic Throttles and Display Controllers



**SURE GRIP**<sup>™</sup>  
CONTROLS INC.

## Joysticks

We offer reliable single axis and multi axis joystick controls that can be configured to your exact needs.



### JSC Series Joystick

Flexible design and connection options for the rugged off-road market.

- Dual axis
- IP69K/IP67 sealing
- CANbus J1939 output
- -40°C (-40°F) and +85°C (185°F) operating temperature



### Endurance Series Joystick

Built to withstand the most demanding environments with maximum operator comfort.

- Dual axis, ergonomic design
- IP69K (IP67 below panel) sealing
- SAE J1939, CANopen outputs
- -40°C (-40°F) and +85°C (185°F) operating temperature



### Elevate Series Joystick

Durable control for MEWP equipment and single-axis applications.

- Single axis
- IP69K sealing
- Ratiometric 0.5 VDC to 4.5 VDC output
- -40°C (-40°F) and +85°C (185°F) operating temperature



### JSM Joystick

Multiple output options and internal wire configuration for harsh environments.

- Single or contact-less multi-axis
- Up to IP67K sealing (handle dependent)
- CAN, Proportional, switched, USB, and PWM output
- -40°C (-40°F) and +85°C (185°F) operating temperature



### JSL Joystick

Our largest joystick featuring multiple output options and gimbal mounting.

- Single or multi-axis
- Up to IP67K sealing (handle dependent)
- CAN, Proportional, switched, USB, and PWM output
- -40°C (-40°F) and +85°C (185°F) operating temperature

## Industry-Specific Joysticks

These joysticks have the ideal handle and base combination for your specific application.



### Demand Series Joystick

An ergonomic control solution that provides reliability and efficiency to today's refuse collection vehicles (RCVs).

- Dual axis
- IP67K sealing
- CAN output
- -40°C (-40°F) and +85°C (185°F) operating temperature



### Harvest Series Joystick

A configurable, rugged and long-lasting solution for electronic control in agricultural harvesting machines.

- Single and dual axis spring-return-to-center or friction hold configurations available
- Sealing up to IP67
- Proportional and switched outputs
- Operating Temperature - 40° to +85°C



### Precision Series Joystick

These joysticks feature the right combination of buttons, sliders and rockers suitable for telehandler designs.

- Dual axis
- IP67K sealing
- -40°C (-40°F) and +85°C (185°F) operating temperature

## Miniature Thumb Controls

Precise, linear motion control for stand-alone installations or in our electronic and universal handles.



### Slider Module

- Ergonomic modular design
- IP67 sealing
- Compact footprint
- Extended travel range of +/-24° for precise control

# Joystick Handles

---

Our modular handles offer precision and operator comfort for the most extreme environments. All handles are designed to be paired with Sure Grip Controls' bases; universal handles can also be configured to work with other manufacturer's bases.

## ELECTRONIC HANDLES



### BE Center Lock Handle

A revolutionary and secure center-lock handle designed for comfortable control.

- IP67 sealing
- Ergonomic paddle-style lever
- Designed for JSM joystick base



### LE Handle

Our large electronic handle designed to support up to 10 buttons.

- IP67 sealing
- Customizable sealed overlay
- Designed for JSL and JSM joystick bases



### JE Handle

An ergonomic electronic handle that can support up to 4 buttons.

- IP67 sealing
- Customizable sealed overlay
- Designed for JSL and JSM joystick bases



### KE & NE Handles

Lightweight and durable with excellent ergonomics, ideal for extreme duty applications.

- Sealing up to IP67
- Switch tested to 10 million operations
- Available with 0, 1 or 2 switches
- Designed for JSL and JSM joystick bases

## UNIVERSAL HANDLES



### LU Handles

Our large, universal handle with a sleek design and easy-to-use interface accommodates up to 10 buttons.

- Sealing up to IP67
- Switches tested to 10 million operations
- Customizable sealed overlay



### CU Handles

Mid-sized universal handle that can support up to 4 buttons.

- IP67 sealing
- Customizable sealed overlay
- Standard configurations for next-day shipping



### SU Handles

Small and ergonomic universal handle that supports up to 2 buttons.

- IP67 sealing
- Customizable sealed overlay
- Standard configurations for next-day shipping



### AU Handles

Adjustable shaft diameter and rotating faceplate for aftermarket applications.

- Attaches to 3/8" to 3/4" diameter shafts
- 360° rotating faceplate
- Supports up to 4 buttons or 2 modules



### Switched Rocker Module

Long-lasting, ergonomic modules for stand-alone installations or in our handles.

- Ergonomic modular design
- IP67 sealing
- Compact footprint
- Extended travel range of +/-18° for precise control



### Proportional Rocker Module

- Ergonomic modular design
- IP67 sealing
- Redundant version available with SIL2 compatibility
- Extended travel range of +/-18° for precise control



### MJS Joystick

Intuitive thumb control operation for a wide range of stand-alone or joystick applications.

- Ergonomic modular design
- IP67 sealing
- Available with or without thumb rest
- 5 VDC input, tested to 1 million cycles

## IEC Electronic Throttles

---



Reliable and durable throttles designed to meet tough OEM demands.

- Floor mount, suspended and wig-wag throttles
- Non-contact Hall-effect sensing or resistive element technology
- Compatible with all major engine manufacturers
- APS and IVS signals can be factory configured
- Custom throttles to meet unique application needs

## IEC Display Controllers

---



From analog tachometers to high-performance J1939 CANBUS controllers, IEC high-performance displays are ideal for demanding OEM applications.

- Smart displays and controllers customizable for many different applications
- Analog display controllers that operate up to 4,000 RPM
- Environmentally sealed for extreme environment, high-vibration and all-weather applications
- Multiple input types including J1939, alternator, magnetic pickup and AC coil pack

Sure Grip Controls is an ISO certified company specializing in custom control solutions for vehicles and equipment in agriculture, construction, forestry, transportation and industrial applications. Our joysticks, miniature thumb controls, and control electronics are meticulously designed, engineered, manufactured and quality-tested to meet manufacturer's specifications while delivering long-lasting, reliable performance. We work closely with hundreds of original equipment manufacturers around the world to develop innovative solutions to their challenges. Whether it's a few joysticks or thousands, our engineering, manufacturing and fulfillment teams are ready to produce your project. Our flexible manufacturing and distribution systems are designed to meet the needs of our global customers.

**Contact us today to find out why there's nothing we can't handle.**

suregripcontrols.com | 1-800-831-2278 | sales@suregripcontrols.com