



Precise Control
International Systems Integrators



Opticom Wireless Systems Catalogue



Est. 1973

Committed to Industrial Video Excellence

Sawmills	Refineries	Mining
Pulp & Paper	Petrochemical	Railway
Aggregate	Offshore/Oil Rigs	Utilities
Agriculture	Port Authorities	Transportation
Marine	Energy	Manufacturing
Military	Steel Mills	Biomass
Food Processing	Grain Terminals	Engineering

"I would challenge others to find a harsher environment than a TBM (Tunnel Boring Machine). We used cameras at multiple locations along the TBM to view progress and as indicators for material conveyance. These cameras were mounted beside conveyor belts which had hard rock tunneling waste transported at high speed past the camera. It was not uncommon for small and medium size rocks to hit these cameras on the lens and body. They stood up to this punishment 24/7 and the only thing replaced was the occasional protective glass on the camera enclosure. I would recommend these cameras for all harsh environment CCTV monitoring and surveillance. I believe they are virtually indestructible."

- Colin Savage, B.A.Sc., M.A.Sc., Seymour Capilano Twin Tunnels Project

OPTICOM**Wireless Video & PTZ Data System
AR-4000D, AR4000D-H****Features**

Video & PTZ Data System
 4,000 Foot Range
 Eight Field Selectable Channels
 Seamless Operation with RS422 PTZ
 LED Power Lights on Data TX & RX
 Optional Thermostatic Heater
 High-Tech Microstrip Antennas

AR-4000D Kit Includes:

Video Transmitter
 PTZ Data Receiver
 Internal Transmitter Antenna
 External Data Antenna
 Video Receiver
 PTZ Data Transmitter
 Internal Receiver Antenna
 (2) DC Power Adapters
 Installation/Operation Manual
 (2) Pole Mount Brackets
 Mounting Hardware

*Weatherproof NEMA 4X
 non-metallic enclosure provided
 with a mast mounted bracket
 (2" diameter mast, minimum
 size)

Optional Heater Model: AR4000D-H

Heater Model	24VAC @ 1.4A wall transformer
Power Options	(standard) or 85~264VAC, 50/60Hz; 40 watts
Operating Temperature	-4°~149° F (-20°~65° C)

Specifications	AR-4000D
Power Options	12VDC @ 500mA wall transformer (standard) or 85~264VAC, 50/60Hz; 25 watts
Frequency Band	5.732 GHz to 5.867 GHz
Frequency Accuracy	50 ppm, -4°~113° F (-20°~45° C)
Effective Radiated Power	50,000 micro-volts / meter @ 3 meters
Transmitter Attack Time	Less than 5m/sec.
Spurious & Harmonics	Less than -60 dBc
Modulation	FM Video
Pre-Emphasis	Complies to ITR and CCIR, 405-1
Antenna	Gain +24 dBd, beamwidth 160°
Noise Figure (Total System)	< 4 dB
Video Input/Output	Composite Video (1.0V p-p) 75 Ohm impedance
Connectors	BNC Female (Transmitter & Receiver)
Power	Phoenix contact P/N 1757019
Weight	7 lbs / 3.18 kg
Dimensions	W x H x D: 9.3 x 11.3 x 5.3 inches / 23.6 x 28.7 x 13.5 cm
PTZ Data Transceiver	
Power Options	12VDC @ 500mA wall transformer (standard) or 85~264VAC, 50/60Hz; 25 watts
Frequency Band	902~928 MHz
Output Power	100mW
Radio Technique	FHSS
Modulation	FSK
Channels	32
Antenna Connector	"N" Type Female (50 Ohms)
Supported Communications	Standard: RS422, RS485 (2-wire) Optional: RS232, RS485 (4-wire)

Opticom Technologies Inc.
 www.opticomtech.com
 www.toughestvideocamera.com

USA Sales: Battle Creek, Michigan: 800-578-1853
Canada: Head Office (Vancouver): 855-569-3240
 Quebec (Montreal): 888-222-3321
 Maritimes (St. John): 888-224-3450

Wireless Video Solutions: AR-4000I, AR-4000I-H



Features

- 5.8Ghz Transmitter & Receiver Kit
- 4,000 Foot Range
- Designed for Extreme Environments
- Eight Field Selectable Channels
- Channel Lock VCO
- Optional Thermostatic Heater
- High-Tech Microstrip Antennas

AR-4000 Kit Includes:

- Video Transmitter
- Internal Transmitter Antenna
- External Data Antenna
- Video Receiver
- Internal Receiver Antenna
- (2) AC/DC Power Adapters
- Installation/Operation Manual
- (2) Pole Mount Brackets
- Mounting Hardware

*Weatherproof NEMA 4X non-metallic enclosure provided with a mast mounted bracket (2" diameter mast, minimum size)

Optional Heater Model: AR4000I-H

Heater Model	24VAC @ 1.4A wall transformer
Power Options	(standard) or 85~264VAC, 50/60Hz; 40 watts
Operating Temperature	-4°~149° F (-20°~65° C)

Specifications	AR-4000
Power Options	12VDC @ 500mA wall transformer (standard) or 85~264VAC, 50/60Hz; 25 watts
Frequency Band	5.732 GHz to 5.867 GHz
Frequency Accuracy	50 ppm, -4°~113° F (-20°~45° C)
Effective Radiated Power	50,000 micro-volts / meter
Transmitter Attack Time	Less than 5m/sec.
Spurious & Harmonics	Less than -60 dBc
Modulation	FM Video
Pre-Emphasis	Complies to ITR and CCIR, 405-1
Antenna (Transmitter/Receiver)	Gain +24 dBd, microstrip, beamwidth 14°
Noise Figure (Total System)	< 4 dB
Video Input/Output	Composite Video (1.0V p-p) 75 Ohm impedance
Connectors	BNC Female (Transmitter & Receiver)
Power	Phoenix contact P/N 1757019
Weight	6 lbs / 2.72 kg
Dimensions	W x H x D: 9.3 x 11.3 x 5.3 inches / 23.6 x 28.7 x 13.5 cm

Wireless Video Receiver RX-5808



Features

- 5.8Ghz Desktop Receiver
- 1,000 Foot Range (300 Feet Indoors)
- Eight Field Selectable Channels
- Easy Installation / Front Panel Controls
- Low Susceptibility to Interference
- Wall or Surface Mounting

Specifications	RX-5808
Frequency Band	5.733 GHz to 5.866 GHz
Channels	8 User Selectable Channels
Effective Radiated Power	50,000 micro-volts @ 3m
Range (Line of Sight)	1,000 Feet Max. Outdoors / 300 Feet Max. Indoors
Video Format	NTSC (30fps) or PAL (25fps)
Protocol	FM Analog
Sensitivity	-84dBm
Antenna Type	3dB Omnidirectional Rubber Duck – SMA Female
Antenna Plane Beam	E: 50° / H: 360°
Antenna Connector	SMA-Female
Video Input/Output	Composite Video (BNC), 1.0V p-p, 75 Ohm impedance
Audio Connector	RCA Female @ 600 Ohms, 1V p-p
Video Connectors	BNC Female
Operating Temperature	-22°F to +150°F (-30°C to +65°C)
Power Options	12VDC wall transformer x 2
Operating Voltage	9–15VDC – Polarity & Surge Protected
Power Consumption	Transmitter: 170mA @ 12VDC Receiver: 230mA @ 12VDC
Weight	1.7 lbs / 0.77 kg
Dimensions	W x H x D: 7.4 x 1.2 x 4.2 inches / 18.8 x 3.0 x 10.7 cm
FCC / IC Approved	Yes

Wireless Video Receiver RXO-5808Q9



Features

- All Weather 5.8GHz Receiver
- Up to 4 Miles Range* (Line of Sight)
- Eight Field Selectable Channels
- Waterproof IP67 Enclosure
- Embedded 29dB Patch Antenna
- Low Susceptibility to Interference

More Features

Easy to Install & Set-up

Compact & Lightweight Design

Incl. Pole Mount Bracket & Hardware

** Transmitter & Antenna Sold Separately. Wireless transmission depends on Transmitter/Antenna selected up to a maximum range of 2,000 feet.*



Parabolic Grid Antenna, Mounting Brackets & Hardware Included

Specifications	RXO-5808Q9
Frequency Band	5.725GHz – 5.875GHz
Channels	8 User Selectable Channels
Effective Radiated Power	50,000 micro-volts @ 3m
Range (Line of Sight)	Depends on Transmitter / Antenna Used (Sold Separately)
Video Format	NTSC (30fps) or PAL (25fps)
Protocol	FM Analog
Sensitivity	-84dBm
Impedance:	50 Ohms
Antenna Type	External All-Weather 29dB Parabolic Grid
Antenna Connector	SMA-Female
Antenna Polarization	Vertical Linear
Antenna Plane Beam	E: 9.5° / H: 8°
Video Input/Output	Composite Video (BNC), 1.0V p-p, 75 Ohm impedance
Audio Connector	BNC Female @ 600 Ohms, 1V p-p
Video Connectors	BNC Female
Enclosure Construction	IP-67 Rated All-Weather Design
Operating Temperature	-40°F to +170°F (-40°C to 77°C)
Power Supply	12VDC Transformer x 1
Operating Voltage	9–15VDC – Polarity & Surge Protected
Power Consumption	Transmitter: 170mA @ 12VDC Receiver: 230mA @ 12VDC
Weight	1.96 lbs / 0.89 kg
Dimensions	W x H x D: 7.0 x 7.0 x 4.0 inches / 17.8 x 17.8 x 10.2 cm
Antenna Weight	8.2lbs / 3.72 kg
Antenna Dimensions	34 x 28 inches / 86.5 x 71.1 cm
FCC / IC Approved	Yes

Wireless Video Receiver RXO-5808R6



Features

- All Weather 5.8GHz Receiver
- Up to 2000 Ft. Range* (Line of Sight)
- Eight Field Selectable Channels
- Waterproof IP67 Enclosure
- Embedded 7dB Patch Antenna
- Low Susceptibility to Interference

More Features

Easy to Install & Set-up

Compact & Lightweight Design

Incl. Pole Mount Bracket & Hardware

** Transmitter & Antenna Sold Separately. Wireless transmission depends on Transmitter/Antenna selected up to a maximum range of 2,000 feet.*



Mounting Bracket & Hardware Included

Specifications	RXO-5808R6
Frequency Band	5.725GHz – 5.875GHz
Channels	8 User Selectable Channels
Effective Radiated Power	50,000 micro-volts @ 3m
Range (Line of Sight)	Depends on Transmitter / Antenna Used (Sold Separately)
Video Format	NTSC (30fps) or PAL (25fps)
Protocol	FM Analog
Sensitivity	-84dBm
VSWR (Return Loss):	<1.5:1
Impedance:	50 Ohms
Antenna Type	Embedded 7dB Directional Patch Antenna
Antenna Connector	SMA-Female
Antenna Polarization	Circular
Antenna Plane Beam	E: 32° / H: 32°
Video Input/Output	Composite Video (BNC), 1.0V p-p, 75 Ohm impedance
Audio Connector	BNC Female @ 600 Ohms, 1V p-p
Video Connectors	BNC Female
Enclosure Construction	IP-67 Rated All-Weather Design
Operating Temperature	-40°F to +170°F (-40°C to 77°C)
Power Supply	12VDC wall transformer x 1
Operating Voltage	9–15VDC – Polarity & Surge Protected
Power Consumption	Transmitter: 170mA @ 12VDC Receiver: 230mA @ 12VDC
Weight	1.8 lbs / 0.82 kg
Dimensions	W x H x D: 7.0 x 7.0 x 4.0 inches / 17.8 x 17.8 x 10.2 cm
FCC / IC Approved	Yes

Wireless Video Receiver RXO-5808R6



Features

- All Weather 5.8Ghz Receiver
- Up to 2000 Ft. Range* (Line of Sight)
- Eight Field Selectable Channels
- Waterproof IP67 Enclosure
- Embedded 7dB Patch Antenna
- Low Susceptibility to Interference

More Features

Easy to Install & Set-up

Compact & Lightweight Design

Incl. Pole Mount Bracket & Hardware

** Transmitter & Antenna Sold Separately. Wireless transmission depends on Transmitter/Antenna selected up to a maximum range of 2,000 feet.*



Mounting Bracket & Hardware Included

Specifications	RXO-5808R6
Frequency Band	5.725GHz – 5.875GHz
Channels	8 User Selectable Channels
Effective Radiated Power	50,000 micro-volts @ 3m
Range (Line of Sight)	Depends on Transmitter / Antenna Used (Sold Separately)
Video Format	NTSC (30fps) or PAL (25fps)
Protocol	FM Analog
Sensitivity	-84dBm
VSWR (Return Loss):	<1.5:1
Impedance:	50 Ohms
Antenna Type	Embedded 7dB Directional Patch Antenna
Antenna Connector	SMA-Female
Antenna Polarization	Circular
Antenna Plane Beam	E: 32° / H: 32°
Video Input/Output	Composite Video (BNC), 1.0V p-p, 75 Ohm impedance
Audio Connector	BNC Female @ 600 Ohms, 1V p-p
Video Connectors	BNC Female
Enclosure Construction	IP-67 Rated All-Weather Design
Operating Temperature	-40°F to +170°F (-40°C to 77°C)
Power Supply	12VDC wall transformer x 1
Operating Voltage	9–15VDC – Polarity & Surge Protected
Power Consumption	Transmitter: 170mA @ 12VDC Receiver: 230mA @ 12VDC
Weight	1.8 lbs / 0.82 kg
Dimensions	W x H x D: 7.0 x 7.0 x 4.0 inches / 17.8 x 17.8 x 10.2 cm
FCC / IC Approved	Yes

Wireless Video Solutions: TCO-5808Q4

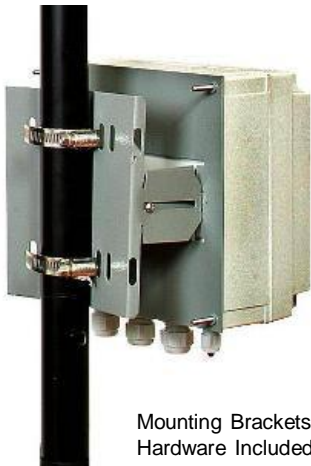


Features

- Complete Transmitter & Receiver Kit
- 1 Mile Range (Line of Sight)
- Eight Field Selectable Channels
- All Weather IP 67 Rating
- Easy Installation with LED Indicators
- Low Susceptibility to Interference

TCO-5808Q4 Kit Includes:

- Video Transmitter
- Video Receiver
- 2 x 12 VDC Power Adapters
- Installation/Operation Manual
- Brackets & Mounting Hardware



Mounting Brackets &
Hardware Included

Specifications	TCO-5808Q4
Frequency Band	5.725 GHz to 5.875 GHz
Channels	8 User Selectable Channels
Effective Radiated Power	50,000 micro-volts @ 3m
Range & Elevation	Up to 1 Mile (Line of Sight) @ Minimum 9 Feet Elevation
Video Format	NTSC (30fps) or PAL (25fps)
Protocol	FM Analog
Sensitivity	-84dBm
Antenna Type	Transmitter: Embedded 3dB Directional Patch Antenna Receiver: Embedded 14dB Directional Patch Antenna
Antenna Plane Beam	E: 32° / H: 32°
Video Input/Output	Composite Video (BNC), 1.0V p-p, 75 Ohm impedance
Audio Connector	BNC-Female @ 600 OHMS 1 Volt P-P
Connectors	BNC Female (Transmitter & Receiver)
Enclosure Construction	IP-67 Rated All-Weather Design
Operating Temperature	-40°F to +170°F (-40°C to +77°C)
Power Options	12VDC wall transformer x 2 (Model # PS-1250CLX Class V CEC)
Operating Voltage	9-15VDC - Polarity & Surge Protected
Power Consumption	Transmitter: 170mA @ 12VDC Receiver: 230mA @ 12VDC
Weight	Transmitter: 1.8 lbs / 0.82 kg Receiver: 1.96 lbs / 0.89 kg
Dimensions	W x H x D: 7.0 x 7.0 x 4.0 inches / 17.8 x 17.8 x 10.2 cm (Both Transmitter & Receiver Enclosures)
FCC / IC Approved	Yes



Features

- 5.8Ghz Transmitter & Receiver Kit
- Long Range – Up to 4 Miles
- Eight Field Selectable Channels
- All Weather IP67 Rating
- Easy Installation with LED Indicators
- Low Susceptibility to Interference

Kit Includes:

- Video Transmitter
- Video Receiver
- 1 x Parabolic Grid Antenna
- 2 x 12 VDC Power Adapters
- Installation/Operation Manual
- Brackets & Mounting Hardware



Parabolic Grid Antenna, Mounting Brackets & Hardware Included

Specifications	TCO-5808Q9
Frequency Band	5.725 GHz to 5.875 GHz
Channels	8 User Selectable Channels
Effective Radiated Power	50,000 micro-volts @ 3m
Range & Elevation	Up to 4 Miles (Line of Sight) @ Minimum 20 Feet Elevation
Video Format	NTSC (30fps) or PAL (25fps)
Protocol	FM Analog
Sensitivity	-84dBm
Antenna Type	Transmitter: Embedded 3dB Directional Patch Antenna Receiver: External All-Weather 29dB Parabolic Grid Antenna
Antenna Plane Beam	E: 32° / H: 32°
Antenna Cable	6' N-Male - SMA-Male Low Loss Microwave Cable
Antenna Dimensions	34 x 28 inches / 86.5 x 71.1 cm
Video Input/Output	Composite Video (BNC), 1.0V p-p, 75 Ohm impedance
Audio Connector	BNC-Female @ 600 OHMS 1 Volt P-P
Video Connectors	BNC Female (Transmitter & Receiver)
Enclosure Construction	IP-67 Rated All-Weather Design
Operating Temperature	-40°F to +170°F (-40°C to +77°C)
Power Options	12VDC wall transformer x 2
Operating Voltage	9-15VDC – Polarity & Surge Protected
Power Consumption	Transmitter: 170mA @ 12VDC Receiver: 230mA @ 12VDC
Weight	Transmitter: 1.8 lbs / 0.82 kg Receiver: 1.63 lbs / 0.75 kg
Dimensions	W x H x D: 7.0 x 7.0 x 4.0 inches / 17.8 x 17.8 x 10.2 cm (Both Transmitter & Receiver Enclosures)
Antenna Weight	8.2lbs / 3.72 kg
Antenna Dimensions	34 x 28 inches / 86.5 x 71.1 cm
FCC / IC Approved	Yes



Features

- 5.8GHz Transmitter & Receiver Kit
- Transmit Up to 2,000 Feet
- Eight Field Selectable Channels
- All Weather IP67 Rating
- Easy Installation with LED Indicators
- Low Susceptibility to Interference

Kit Includes:

- Video Transmitter
- Video Receiver
- 2 x 12 VDC Power Adapters
- Installation/Operation Manual
- Brackets & Mounting Hardware



Mounting Brackets &
Hardware Included

Specifications	TCO-5808R6
Frequency Band	5.725 GHz to 5.875 GHz
Channels	8 User Selectable Channels
Effective Radiated Power	50,000 micro-volts @ 3m
Range & Elevation	Up to 2,000 Feet (Line of Sight) @ Min. 8 Ft Elevation
Video Format	NTSC (30fps) or PAL (25fps)
Protocol	FM Analog
Sensitivity	-84dBm
Antenna Type	Transmitter: Embedded 3dB Directional Patch Antenna Receiver: Embedded 7dB Directional Patch Antenna
Antenna Plane Beam	E: 32° / H: 32°
Antenna Connector	SMA-Female
Video Input/Output	Composite Video (BNC), 1.0V p-p, 75 Ohm impedance
Audio Connector	BNC-Female @ 600 OHMS 1 Volt P-P
Video Connectors	BNC Female (Transmitter & Receiver)
Enclosure Construction	IP-67 Rated All-Weather Design
Operating Temperature	-40°F to +170°F (-40°C to +77°C)
Power Options	12VDC wall transformer x 2
Operating Voltage	9-15VDC - Polarity & Surge Protected
Power Consumption	Transmitter: 170mA @ 12VDC Receiver: 230mA @ 12VDC
Weight	Transmitter: 1.8 lbs / 0.82 kg Receiver: 1.63 lbs / 0.75 kg
Dimensions	W x H x D: 7.0 x 7.0 x 4.0 inches / 17.8 x 17.8 x 10.2 cm (Both Transmitter & Receiver Enclosures)
Antenna Weight	8.2lbs / 3.72 kg
Antenna Dimensions	34 x 28 inches / 86.5 x 71.1 cm
FCC / IC Approved	Yes

Wireless Video Transmitter TX-5808



Features

- 5.8Ghz Desktop Transmitter
- 1,000 Foot Range (300 Feet Indoors)
- Eight Field Selectable Channels
- Easy Installation / Front Panel Controls
- Low Susceptibility to Interference
- Wall or Surface Mounting

Specifications	TX-5808
Frequency Band	5.733 GHz to 5.866 GHz
Channels	8 User Selectable Channels
Effective Radiated Power	50,000 micro-volts @ 3m
Range (Line of Sight)	1,000 Feet Max. Outdoors / 300 Feet Max. Indoors
Video Format	NTSC (30fps) or PAL (25fps)
Protocol	FM Analog
Sensitivity	-84dBm
Antenna Type	Omnidirectional Rubber Duck – SMA Male
Antenna Connector	SMA-Female
Video Input/Output	Composite Video (BNC), 1.0V p-p, 75 Ohm impedance
Audio Connector	RCA Female @ 600 Ohms, 1V p-p
Video Connectors	BNC Female
Operating Temperature	-22°F to +150°F (-30°C to +65°C)
Power Options	12VDC wall transformer x 2
Operating Voltage	9–15VDC – Polarity & Surge Protected
Power Consumption	Transmitter: 170mA @ 12VDC Receiver: 230mA @ 12VDC
Weight	1.7 lbs / 0.77 kg
Dimensions	W x H x D: 7.4 x 1.2 x 4.2 inches / 18.8 x 3.0 x 10.7 cm
FCC / IC Approved	Yes

Wireless Video Transmitter TXO-5808T3



Features

- All Weather 5.8Ghz Transmitter
- Up to 4 Miles Range* (Line of Sight)
- Eight Field Selectable Channels
- Waterproof IP67 Enclosure
- Easy Installation with LED Indicators
- Low Susceptibility to Interference

More Features

Easy to Install & Set-up

Compact & Lightweight Design

Incl. Pole Mount Bracket & Hardware

** Receiver/Antenna Sold Separately.
Wireless transmission depends on
Receiver/Antenna selected up to a
maximum range of 4 miles.*



Mounting Bracket &
Hardware Included

Specifications	TXO-5808T3
Frequency Band	5.725GHz – 5.875GHz
Channels	8 User Selectable Channels
Effective Radiated Power	50,000 micro-volts @ 3m
Range (Line of Sight)	Up to 4 Miles Depending on Receiver/Antenna Used
Video Format	NTSC (30fps) or PAL (25fps)
Protocol	FM Analog
Sensitivity	-84dBm
VSWR (Return Loss):	<1.5:1
Impedance:	50 Ohms
Antenna Type	Transmitter Antenna Sold Separately
Antenna Connector	SMA-Female
Antenna Cable Loss	6 inch Low Loss Microwave Cable
Video Input/Output	Composite Video (BNC), 1.0V p-p, 75 Ohm impedance
Audio Connector	BNC Female @ 600 Ohms, 1V p-p
Video Connectors	BNC Female
Enclosure Construction	IP-67 Rated All-Weather Design
Operating Temperature	-40°F to +170°F (-40°C to 77°C)
Power Supply	12VDC wall transformer x 1
Operating Voltage	9–15VDC – Polarity & Surge Protected
Power Consumption	Transmitter: 170mA @ 12VDC Receiver: 230mA @ 12VDC
Weight	1.8 lbs / 0.82 kg
Dimensions	W x H x D: 7.0 x 7.0 x 4.0 inches / 17.8 x 17.8 x 10.2 cm
FCC / IC Approved	Yes

Outdoor Wireless IR Camera ZX-580SR120



Features

- 5.8GHz FM Live Real-Time Video
- Up to 4 Miles Wireless Range*
- 580 TV Lines Color / 700 Lines B/W
- Day/Night Operation
- 36 Pc. IR LED Array / 120 Ft. Range
- IP66 Weatherproof Aluminum Housing
- 4~9mm Varifocal Lens
- Externally Adjustable Focus / Zoom

More Features

OSD for Easy Camera Set-up

Min. Illumination .003 Lux

Wall or Ceiling Mount

Privacy Masking / Motion Detection

** Receiver/Antenna Sold Separately.
Wireless transmission depends on
Receiver/Antenna selected up to a
maximum range of 4 miles.*

Specifications	ZX-580SR120
Image Sensor	1/3" SONY Super HAD CCD
Resolution	580 TV Lines Color / 700 TV Lines B/W
Lens	4.0~9.0mm Varifocal Lens
Scanning System	2:1 Interlaced
Video Output	1.0 Vp-p Composite Video, 75 Ohms
Electronic Shutter Speed	Auto/Manual (1/60sec ~ 1/100,000sec)
Minimum Illumination	0.003 LUX @ F1.2
Operating Frequency	5.725GHz – 5.875GHz; 8 User Selectable Channels
Antenna	3dB Omni-Directional Rubber Duck (SMA-Female Connector)
Range	300 Ft ~ 4 Miles (Depends on Receiver & Antenna Selected - Sold Separately)
Infrared	36 Piece LED Array
IR Range	120 Feet Max. (36m)
Day/Night Function	Auto
Privacy Masking	On / Off
Motion Detection	On / Off
OSD	Built-In On Screen Display
Housing	IP66 All-Weather Cast Aluminum
Power / Consumption	12V DC; 250mA (IR Off) / 500mA (IR On)
Operating Temperature	-40°~170° F (-40°~77° C)
Dimensions	6.2 x 3.2 x 3.2 inches / 15.2 x 8.1 x 8.1 cm
Weight	1.8lbs / 0.84kg

OPTICOM**Outdoor Wireless IR Camera
ZX-580SR200****Features**

5.8GHz FM Live Real-Time Video
 Up to 4 Miles Wireless Range*
 580 TV Lines Color / 700 Lines B/W
 Day/Night Operation
 36 Pc. IR LED Array / 200 Ft. Range
 IP66 Weatherproof Aluminum Housing
 4~9mm Varifocal Lens
 Externally Adjustable Focus / Zoom

More Features

Integrated Samsung W-V DSP
 OSD for Easy Camera Set-up
 Min. Illumination .003 Lux
 Wall or Ceiling Mount
 Privacy Masking / Motion Detection
 * Receiver/Antenna Sold Separately.
 Wireless transmission depends on
 Receiver/Antenna selected up to a
 maximum range of 4 miles.

Specifications	ZX-580SR200
Image Sensor	1/3" SONY Super HAD CCD
Chipset	Samsung W-V DSP
Resolution	580 TV Lines Color / 700 TV Lines B/W
Lens	4.0~9.0mm Varifocal Lens
Scanning System	2:1 Interlaced
Video Output	1.0 Vp-p Composite Video, 75 Ohms
Electronic Shutter Speed	Auto/Manual (1/60sec ~ 1/100,000sec)
Minimum Illumination	0.003 LUX @ F1.2
Operating Frequency	5.725GHz – 5.875GHz; 8 User Selectable Channels
Antenna	3dB Omni-Directional Rubber Duck (SMA-Female Connector)
Range	300 Ft ~ 4 Miles (Depends on Receiver & Antenna Selected - Sold Separately)
Infrared	36 Piece LED Array
IR Range	200 Feet Max. (61m)
Day/Night Function	Auto
Privacy Masking	On / Off
Motion Detection	On / Off
OSD	Built-In On Screen Display
Housing	IP66 All-Weather Cast Aluminum
Power / Consumption	12V DC; 300mA (IR Off) / 500mA (IR On)
Operating Temperature	-40°~170° F (-40°~77° C)
Dimensions	6.2 x 3.2 x 3.2 inches / 15.2 x 8.1 x 8.1 cm
Weight	1.8lbs / 0.84kg

Opticom Technologies Inc.
 www.opticomtech.com
 www.toughestvideocamera.com

USA Sales:
 Canada:

Battle Creek, Michigan:
 Head Office (Vancouver):
 Quebec (Montreal):
 Maritimes (St. John):

800-578-1853
 855-569-3240
 888-222-3321
 888-224-3450

OPTICOM**Outdoor Wireless IR Camera
ZX-580SR240****Features**

5.8GHz FM Live Real-Time Video
 Up to 4 Miles Wireless Range*
 580 TV Lines Color / 700 Lines B/W
 Day/Night Operation
 High Power IR LED's / 240 Ft. Range
 IP66 Weatherproof Aluminum Housing
 6~60mm Varifocal Lens
 Externally Adjustable Focus / Zoom

More Features

OSD for Easy Camera Set-up

Min. Illumination .003 Lux

Wall or Ceiling Mount

Privacy Masking / Motion Detection

** Receiver/Antenna Sold Separately.
 Wireless transmission depends on
 Receiver/Antenna selected up to a
 maximum range of 4 miles.*

Specifications	ZX-580SR240
Image Sensor	1/3" SONY Super HAD CCD
Resolution	580 TV Lines Color / 700 TV Lines B/W
Lens	6.0~60.0mm Varifocal Lens
Scanning System	2:1 Interlaced
Video Output	1.0 Vp-p Composite Video, 75 Ohms
Electronic Shutter Speed	Auto (1/60sec ~ 1/100,000sec)
Minimum Illumination	0.0006 LUX @ F1.2
Operating Frequency	5.725GHz – 5.875GHz; 8 User Selectable Channels
Antenna	3dB Omni-Directional Rubber Duck (SMA-Female Connector)
Range	300 Ft ~ 4 Miles (Depends on Receiver & Antenna Selected - Sold Separately)
Infrared	12 Piece High Power LED Array
IR Range	240 Feet Max. (73m)
Day/Night Function	Auto
Privacy Masking	On / Off
Motion Detection	On / Off
OSD	Built-In On Screen Display
Housing	IP66 All-Weather Cast Aluminum
Power / Consumption	12V DC; 300mA (IR Off) / 500mA (IR On)
Operating Temperature	-40°~170° F (-40°~77° C)
Dimensions	6.2 x 3.2 x 3.2 inches / 15.2 x 8.1 x 8.1 cm
Weight	1.8lbs / 0.84kg

Opticom Technologies Inc.
 www.opticomtech.com
 www.toughestvideocamera.com

USA Sales:
Canada:

Battle Creek, Michigan:
 Head Office (Vancouver):
 Quebec (Montreal):
 Maritimes (St. John):

800-578-1853
 855-569-3240
 888-222-3321
 888-224-3450