

AUTOMATION & ELECTRONICS

Precise Control
International Systems Integrators

Newsletter Volume 1-2014



A&E EXPO STANDS

See Us At Following:

Expo Richmond 2014
May 16th - 17th
Sandston
Virginia, USA



Timber Processing &
Energy Expo 2014
held at Portland
Metropolitan Expo
October 15th - 17th
Portland, USA



Hardwood
Manufacturers
Association HMA's
Event 2015
March 25th - 27th
Nashville TN, USA



Turnbull Lumber North Carolina NEW Optimized Grade & Trimline

"The extreme prototype nature of this project could have gone very poorly had we not had the support and dedication of so many people throughout A&E"

Comment from: Riley Smith of TS manufacturing – Lindsay, Canada
"A&E were contracted to provide Controls and Tally System for an Optimized Hardwood Trimmer Project at Turnbull Lumber". "This system included per species sorting tables, complex controls for short coupled Grader Operated Trimmer system and startup commissioning". "This project was especially controls dependent due to its high integration of multiple lugged chains and relatively short surge capacity".

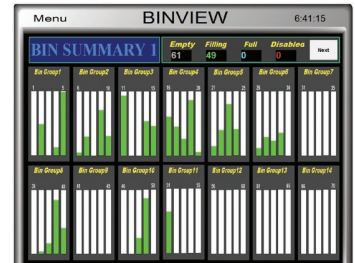


<http://youtube/u4PqThQvOmk>

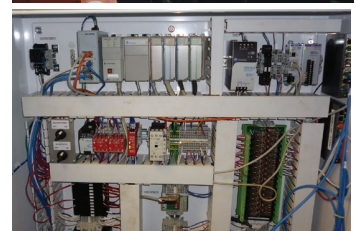
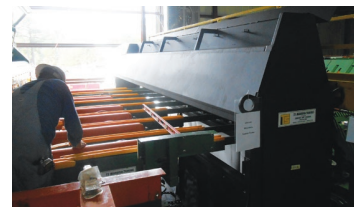
"The project required someone with an integrated Tally Software and controls expertise in complex CIP Motion control". "Additionally, the extremely customized application required a controls vendor that would provide a flexible system while having an existing, proven Lumber Sorting system for a Pull Chain". "We have worked with A&E in the past and found them to be flexible, and offer support for the long term". "Many of their competition in our industry tend to not have 'enough programmers in the cupboard' creating a potential nightmare for us as we are ultimately responsible for the successful completion of the project as the 'Turnkey OEM'".

"A&E has an extremely talented pool of engineers to work with, and a customer facing support focus that is a real asset". "The extreme prototype nature of this project could have gone very poorly had we not had the support and dedication of so many people throughout their company". "The customer is happy, we have several customers that have seen the project since implementation and have interested enquiries for more applications at other facilities". "This wouldn't be possible without the support we received the whole way through the project from A&E".

Riley Smith



Bin	SortPattern	Bin	Previous	Next	Bin	SortPattern
32	0	0	0	0	0	0
33	0	0	0	0	0	0
34	0	0	0	0	0	0
35	0	0	0	0	0	0
36	0	0	0	0	0	0
37	0	0	0	0	0	0
38	0	0	0	0	0	0
39	0	0	0	0	0	0
40	0	0	0	0	0	0
41	0	0	0	0	0	0
42	0	0	0	0	0	0
43	0	0	0	0	0	0
44	0	0	0	0	0	0
45	0	0	0	0	0	0
46	0	0	0	0	0	0
47	0	0	0	0	0	0
48	0	0	0	0	0	0
49	0	0	0	0	0	0
50	0	0	0	0	0	0
51	0	0	0	0	0	0
52	0	0	0	0	0	0
53	0	0	0	0	0	0
54	0	0	0	0	0	0
55	0	0	0	0	0	0
56	0	0	0	0	0	0
57	0	0	0	0	0	0
58	0	0	0	0	0	0
59	0	0	0	0	0	0
60	0	0	0	0	0	0



MAIN OFFICE
4 Portside Drive Mt Maunganui 3116, New Zealand
Ph: +64 7 5746223
Email: sales@automationelec.com
Website: www.automationelec.com



USA OFFICE
P.O. Box 38726, Shreveport, LA, 71133
Ph: 318 548 7852 EMAIL: betsy@automationelecusa.com
Website: www.automationelecusa.com

**Weyerhaeuser
Idabel, West
Prosser at
Maplesville &
Weyerhaeuser
Drayton Valley
Supply & Commission
of Dryspec Controls
onto KDS Windsor
CDK Systems**

*"A&E are our partners
in Dryspec supply world
wide and their service is
first class"*

Keith Robinson

Keith Robertson - International Business Manager - Windsor Engineering Group Ltd.

Keith Robertson of Windsor Engineering Group had this to say of their "state of play" concerning their CDK (continuous drying kiln) and batch kiln products and their Dryspec Electrical Engineering partners Automation and Electronics.

"Across all the Windsor business lines we continue to be very busy and this is particularly true for our CDK (continuous drying kiln) and our batch kiln products. This activity is spread across our New Zealand and North American markets and is a mix of new systems, conversions and upgrade work. We have also managed another "first" with the successful installation, commissioning and hand over of a CDK in Alberta Canada late last year. That CDK has just worked through one of the harshest winters on record and has past/exceeded all its performance targets. Apart from the harsh climatic conditions this is the first CDK drying SPF (Canadian Spruce, Pine and Fir) which has unique characteristics in terms of initial MC (moisture content) and density etc. To give full potential to our efforts in the NW USA and the Canadian markets we have partnered with Wellons who are based in Vancouver, WA, USA and Surrey, BC, Canada and we have already completed two joint projects together. The Wellons Windsor relationship is based on the similar and very successful partnership we have with KDS (Kiln Drying System & Components) i.e. KDS Windsor in the south and southeast USA markets."

In reply, a comment from one of Windsor's/A&E clients Phil Latos of Weyerhaeuser was . . .

"You have something to be very proud of with the Drayton Valley kiln performance in SPF."

"Great job."



*"A&E have supplied & installed
all the CDK and batch kiln
(Waverly) controls systems"*

**Wheeland
Lumber
Company**

Trimline Upgrade

*"The two systems that we
have installed from A&E
have worked flawlessly and
the support is great"*

Derek Wheeland

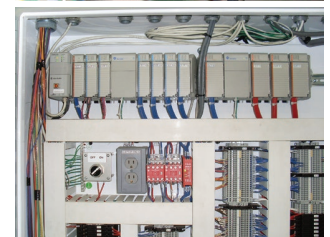
Derek Wheeland, MD of Wheeland Lumber Co had this to say about this recently completed project at their Williamson Trail, Liberty, Pennsylvania mill.

"Automatic & Electronics recently complete the programming and controls for our newly upgraded Trim-line". "The lumber inspector grades each board after it has been measures for thickness, width and length". "All the information that is assigned to each board is sent to the trimmer for the proper fence and trim positioning".

"We choose A&E because of the success that we had experienced previously on our board edger scanning". "With the A&E system, it gives us the flexibility to make changes as we feel fit unlike other systems where our hands are tied because of proprietary codes that don't allow access into others systems".

"The staff at A&E are very knowledgeable and understand what it takes to develop system controls and scanning for the forest products industries". "The two systems that we have installed from A&E have worked flawlessly and the support is great". "We look forward to working with A&E for future controls due to the success that we have seen on previously developed systems".

Derek Wheeland.



**Auswest
Dean Mill
Carriage Controls
and MOF
Scanner**
(Minimum opening face)

*"We found A&E to be very professional and experienced in their knowledge of the requirements needed for the timber industry"
Murray Cassidy*

A&E partner with Gibson Engineering on many projects throughout Australia.

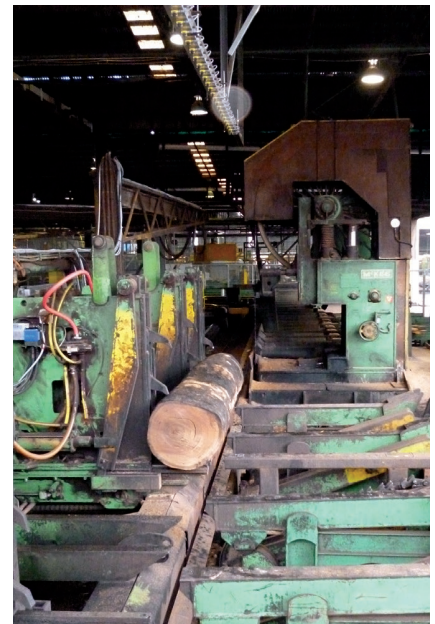
Murray Cassidy - Auswest Timbers Production Manager had the following to say about his experience of Automation and Electronics recently.

"A&E designed a program to scan and monitor the taper of saw logs; this then gives us the ability to cut a centre cant parallel to the heart in small to medium logs".

"We have purchased Gibson equipment in the past and they recommended A&E as that is who they use for their timber sizing and control electronic solutions".

"We found A&E to be very professional and experienced in their knowledge of the requirements needed for the timber industry".

Murray Cassidy.



**Auswest
Dean Mill
NEW Gibson Edger**

*"The job was completed on schedule without any problems"
John Scott*

John Scott Sales Manager at A.E. Gibson and Sons Pty Ltd had the following to say about the installation of an A&E Edgerview system on one of their Combination Multisaw Edgers recently.

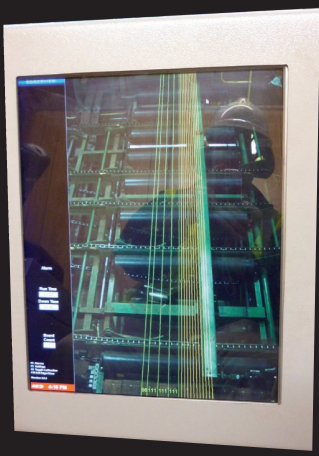
"A&E provided the controls and software for one of our Gibson Combination Multisaw Edgers".

The package included their Edgerview system which have proven to be very successful with our clients".

"We have used A&E on our major projects for nearly 15 years without any significant problems so the choice was practically automatic".

"A&E have now completed in excess of ten Edger Systems now for Gibsons"

John Scott



Max Birt Sawmills

NEW Carriage Setworks at Pokeno Sawmill

"Their backup and operator training is second to none"
Max Birt

Max Birt explained that the job description was as follows:

"A&E installed a new Carriage Setworks with independent knee control at our Pokeno Sawmill".

"The control system was based on Allen Bradley Compact Logix Ethernet PLC combined with Delta 6 Axis positioning modules".

"The original operator console was retained but with a totally new interior including sure grip hand controls on LCD operator interface".

Max then had the following to say of his experience of dealing with Automation and Electronics:

"Automation and Electronics have done a large volume of work for Max Birt Sawmills over the last 15 years". "Over that time I have always found their pricing to be very competitive, but of much more importance to me is the fact that I can rely on Brian and his team to perform to a very high standard and deliver on time".

"Their backup and operator training is second to none"

"As always, Automation & Electronics have delivered what was ordered with extensive back up during the commissioning period". "The project ran slightly over the scheduled time; however the delay was not the fault of A & E as the project was running behind time before A & E started their installation".



Operator Console



Panel View HMI



PLC Cabinet

WPI Winstone Pulp International Ltd

NEW Laser 3D Scanner

"Lasting impression 10 out of 10 for project execution - faultless"
Paul Saunders

Comment from: Paul Saunders General Manager – Pulp Operations

"We wanted to optimize our log mix in order to be able to place more medium size log through our small log line, which has higher productivity than our bandmill line".

"This required fitting a 3D scanner and the associated software".

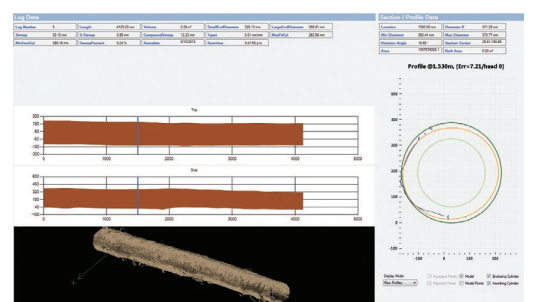
"We have a long relationship with A&E as electronics provider together with Pacific Sawmill Engineering Ltd (PSEL) in New Zealand".

"We use A&E as they have proved to possess extensive knowledge and expertise in the field of Log Scanning and Optimisation and because A&E install and support a number of installations globally".

"We are pleased with the result – Brian Smith visited and quickly comprehended our needs, putting together a tailor made proposal for supply of equipment required".

"Richard wrote the software including the specific reporting functions and process description". "He captured what was required first time around with only a little modification required later".

"Our lasting impression is of a great team effort – 10 out of 10 for project execution – faultless". Paul Saunders





A&E
NEW PRODUCT
UPDATE

NEW



ALL-Weather Industrial Camera
Opticom CC02

Features

- High Resolution 700 TV Lines
- Vibration Resistant
- Titanium Alloy Housing
- Extreme Temperature Rating
- IP-68 Waterproof/Dustproof
- Auto Day/Night Function
- Limited Lifetime Warranty



NEW

Description

The CC02 camera is uniquely designed to meet the rugged environmental demands of heavy industry. The virtually indestructible titanium alloy housing ensures long camera life by shielding the imaging components from dust, moisture, vibration and extreme temperatures. The vibration resistance of the CC02 is unsurpassed. Independent vibration testing has proven the CC02's ability to stand up to the stresses caused by industrial machinery. The specially sealed housing, which is IP-68 rated according to NEMA, prevents dust and water penetration.



VM-1 Vibration Mount

NEW - Optional Mount for very high vibration applications

- Extends Camera Life
- Easy to Install
- Advanced Vibration Damping Design

SAWMILL APPROVED VIDEO CAMERA

**over
10,000
SOLD!**

Specifications	CC02
Image Sensor	1/3" High Resolution CCD
Resolution	700 TV Lines
Illumination	0.01 Lux / F1.8
S/N Ratio	More than 48 dB
Lens	2.9, 3.6, 4.3, 6.0, 8.0, 12.0, 16.0mm avail.
Sync System	Internal
Video Output	1 Vp-p / 75 ohms
NEMA Rating	IP 68
Housing	Titanium Alloy with Gun Metal Grey Powder Coat
Bracket	Tri-Axial Mount included
Power	12V DC or 24V AC
Power Consumption	300mA (Power supply included)
Dimensions	2.36 x 2.75 x 4.26"
Operation Temp.	-76F ~ +140F (-60C ~ +60C)
Weight	1.76 lbs



AUTOMATION & ELECTRONICS
MAIN OFFICE
4 Portside Drive Mt Maunganui 3116, New Zealand
Ph: +64 7 5746223
Email: sales@automationelec.com
Website: www.automationelec.com



AUTOMATION & ELECTRONICS
USA OFFICE
P.O. Box 38726, Shreveport, LA, 71133
Ph: 318 548 7852 EMAIL: betsy@automationelecusa.com
Website: www.automationelecusa.com